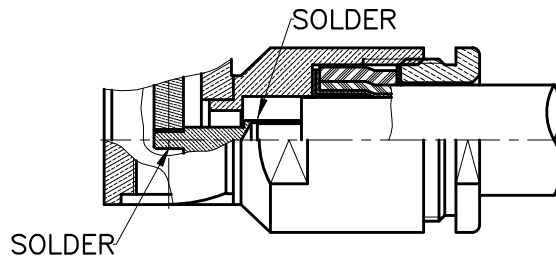
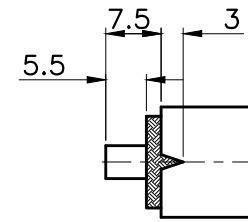


REVISIONS	
ISS	DESCRIPTION \ DATE

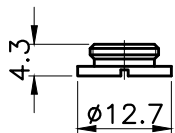
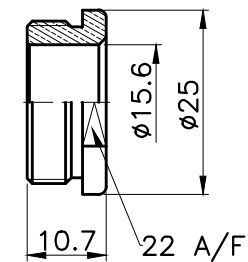
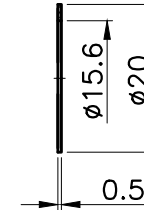
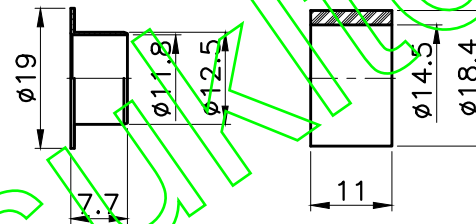
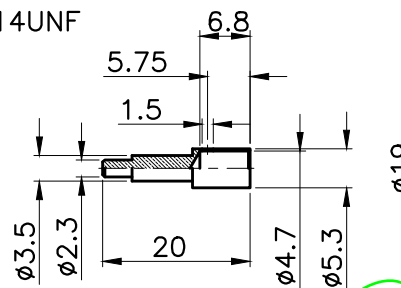
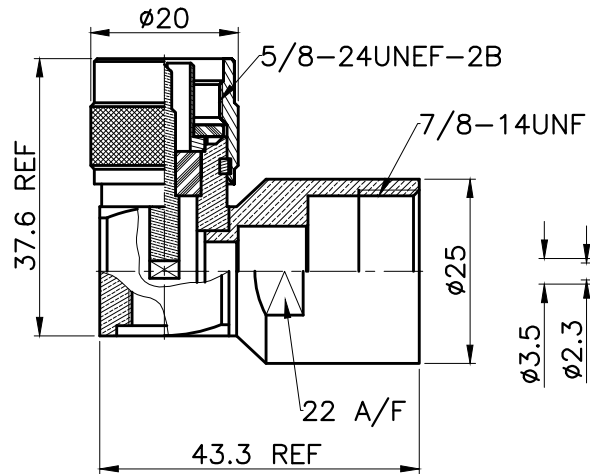


USER GUIDE



RECOMMENDED
CABLE STRIPPING DIM'S

RoHS COMPLIANT



CONNECTORS CABLES



SPECIALISTS LTD.

APRD:	UNLESS OTHERWISE SPECIFIED TOLERANCES 0.5-6 = ±0.2 >6-30 = ±0.4 >30-120 = ±0.6 >120-315 = ±1 >315-1000 = ±1.6 ANGLES = ±5°
CHKD:	
DR:	
DATE: 04/22/13"	UNIT: mm
SHEET: .	SCALE: 1/1

COVER	BRASS	NICKEL
NUT	BRASS	NICKEL
WASHER	BRASS	NICKEL
GASKET	SILICONE	WHITE
TOP HAT	BRASS	NICKEL
CONTACT PIN	BRASS	GOLD
BODY	BRASS	NICKEL
SHELL	BRASS	NICKEL
RING	BRASS	NONE
GASKET	SILICONE	WHITE
BODY	BRASS	NICKEL
CONTACT PIN	BRASS	GOLD
INSULATOR	TEFLON	WHITE
BODY	BRASS	NICKEL
NO. DESCRIPTION	MATERIAL	FINISH

TITLE: N MALE RIGHT ANGLE CLAMP
(FOR LMR600)

PART NO: NPRASC600

030

DR. NO:

ISO 9001 certificate